

1、 Installation

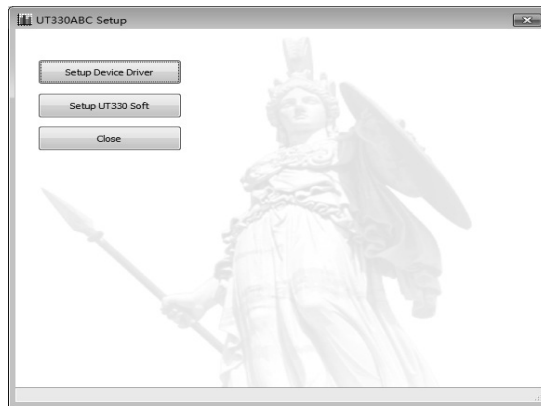
1.1 System Requirements

- Pentium 1G-megahertz (MHz) processor or faster
- At least 1GB of RAM
- At least 2GB of available space on the hard disk
- USB 2.0 / 3.0 Port(s)

1.2 SoftWare only supports the following operating systems:


- Microsoft Windows XP Service Pack 2 or above
 - Microsoft Windows Visa service Pack 2 or above
 - Microsoft Windows 7
- Recommend the use of 32 bit operating system

1.3 Install softWare



Run the Run_Setup.exe program

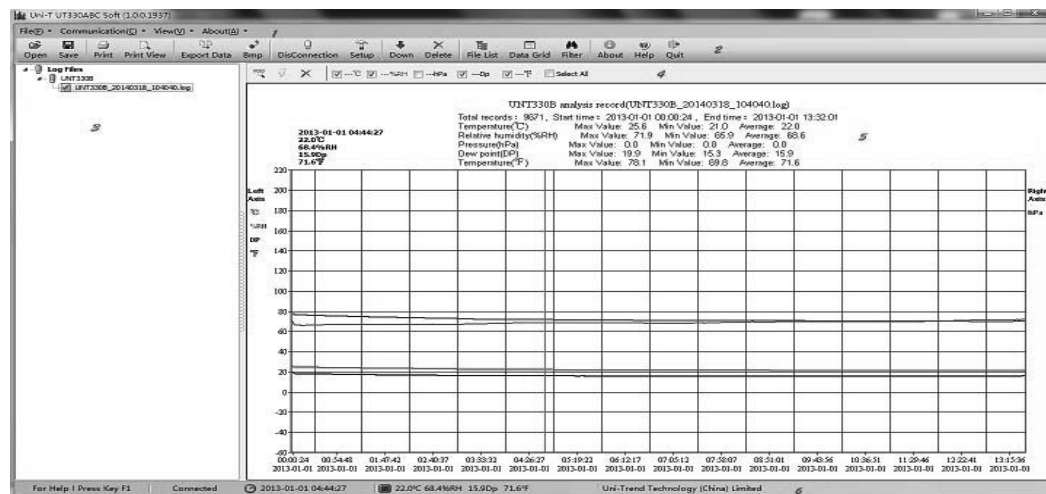
- 1) Setup Device Driver
- 2) Install the UT330 data analysis software

 **UT330ABC.exe** Said the program supports UT330 A, B, C three models

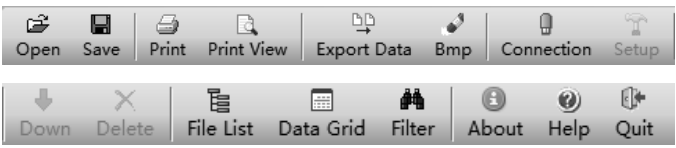


2、 Run Software: Start Menu→All Program→UT330ABC;

Connect the equipment before you plug your device into the computer USB interface

The interface as follows:



2.1 The menu description:

Menu Item		
File(F)	Open	Open the history log data
	Save	Save the current log data
	Export data	Export data list File to CSV or TXT Format File
	Save to Bmp	Save to Bmp format file
	Print	Direct print chart
	Print preview	Print preview chart
	Print Setup	Print setup
	Restory factory setting	Equipment to restore factory settings, data will not be lost.
	Quit	Close Software.
Communication(C)	connection	Connecting devices
	DisConnection	Disconnect the device connected, unplug the device
	Setup	Device parameter settings
	DownLoad	Download the data to the computer equipment
	Delete	Delete equipment data
	View(V)	File list
Data list		View Data detailed list
Filter data		Filter data
Original Image		Image zooming is 100%
Lanauage		Select Lanauage: Simplified Chinese, traditional Chinese, English
InterFace		Select software Operator Face
About (A)	About	Check the software version and the development of information
	Help	View Help File
2 Toolbar	 <p>Function and menu bar corresponding</p>	
3 The list of files, data list area		
4 Chart Tools		
5 Chart analysis of regional data		
6 The status bar	 <p>1-> F1 Invoke the help file. 2-> Display connection status. 3-> The chart to display detailed data.</p>	

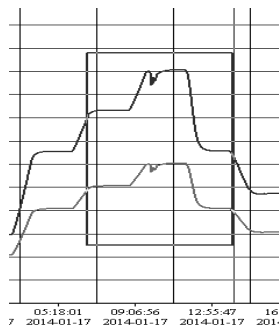
2.2 Chart Tools Function:



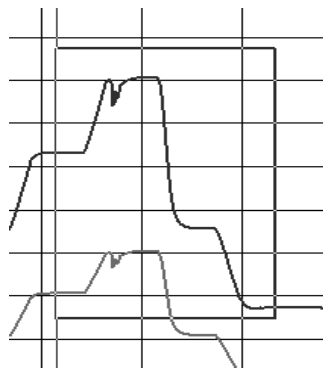
100% View Chart, If the Chart Zoom or UnZoom, then the Chart faster to Original;If

in the chart at right mouse click, the chart will automatically return to the original.

Magnify the chart: the mouse moved to the chart, press and hold the left mouse button to the right place, move the mouse, select the region a red border in the chart, release the left mouse button, will be on the choice of regional data were amplified. The chart data will not be infinitely magnified, the selected number according to the maximum after amplification (chart only a data value scale), the chart will utomatically return to the original.The following diagram:



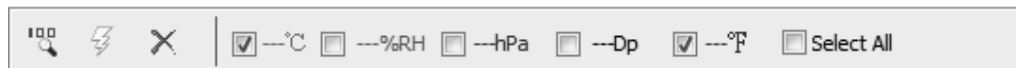
Narrow chart operations: move the mouse to the chart, press and hold the left mouse button, move mouse left, choose a red border region in the diagram appears, release the left mouse button, will be on the choice of regional data reduction. The following diagram:



Refersh Chart: Refersh the chart Data;



Close chart Form, Please save the data



select chart series view.


2.3 Chart function introduction:

2.2.1、Legend: the red line represents the Celsius temperature, °C;%RH: green line indicates the humidity;the blue line pressure hpa; dew point Dp: Black line,; light blue link is °F.

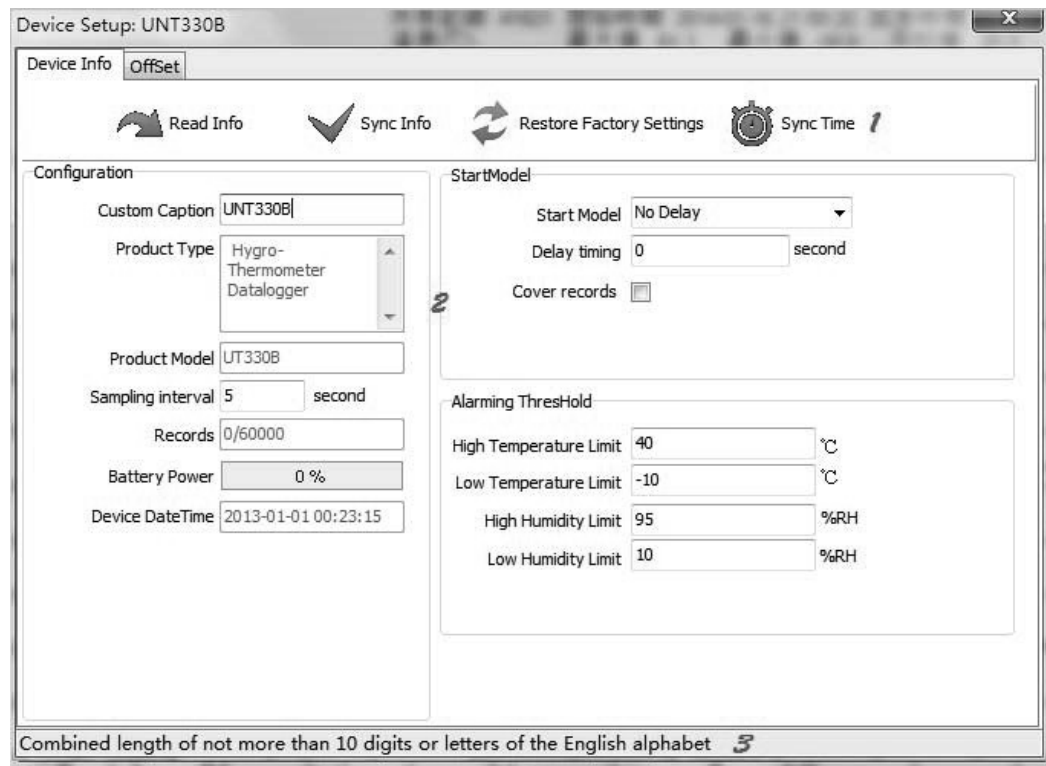
2.2.2、Chart analysis data display, record the start time, end time; the maximum value, the minimum value of each index, and the average value

2.2.3, Chart left axis said: Celsius temperature, humidity, dew point, fahrenheit
2.2.4, Right axis said: pressure
2.2.5, Figure X shows the date and time axis recorded, displayed at the bottom of the chart data name
2.2.6, Transmission standard mobile in the chart, there will be a straight line, at the bottom of the status bar will display the current point record value

2.4 The main function of the toolbar description

 **Connection** Connect the equipment, can carry out equipment parameters, download the data, delete data operations.

 **Setup** Device Setup: DeviceInfo, OffSet



1: PageToolBar

PageToolBar: ReadInfo、Sync Info, Restore Default, Sync Time

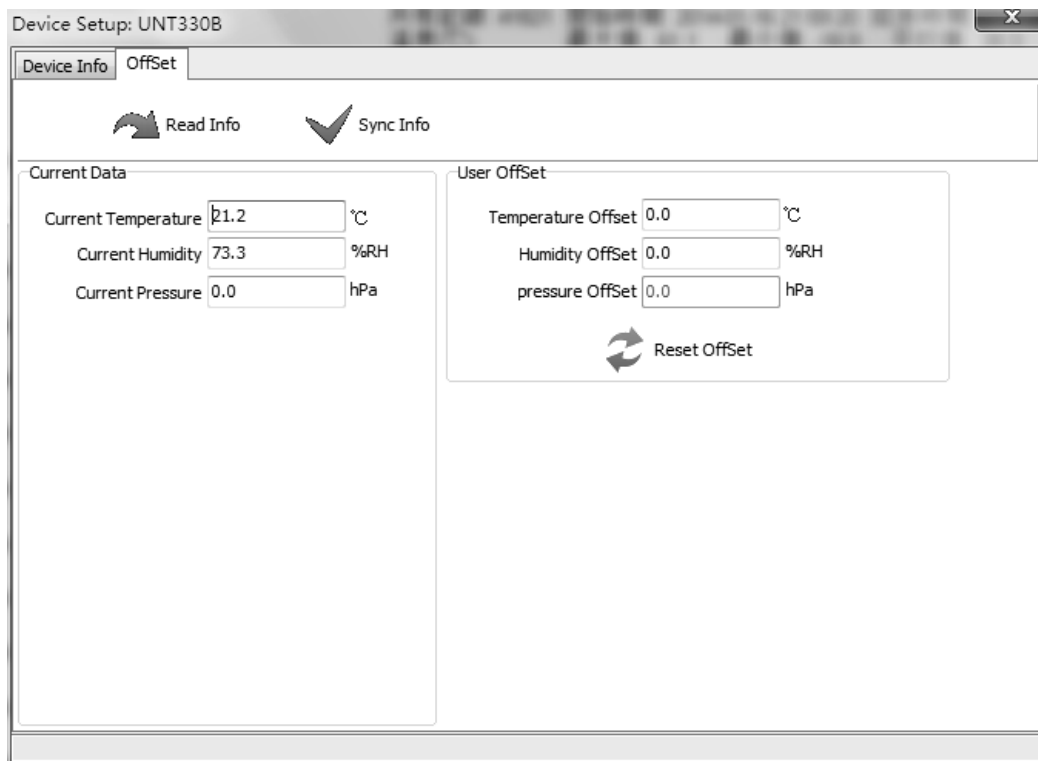
2: Parameter

Custom Caption	You can set the device name, length of English combination of letters and numbers not exceeding 10
Product types	Temperature / humidity / pressure type.
Product model	UT330A says the temperature recorder, UT330B says the temperature / humidity recorder, UT330C says the temperature / humidity / pressure recorder
Sampling interval	A data recording how often, in seconds
Has Record x/y	The equipment have been recorded data, more than 60000 of total record cannot be. X: has records. Y: device support total data
Battery Power	Current device power, when the battery is less than 10%, it is recommended to replace the battery
Device DateTime	The current device to date, if the equipment date is incorrect,

	please timely synchronization time
Start Model	NO Delay: Do not delay, immediately after the device is started work Delay: Delayed work, after the device is started by setting the delay work
Dely Time	Delay, in seconds
Cover Records	Record full, overwrite previously recorded
High/Low Temperature Limit	When the temperature exceeds the parameter, equipment indicator lights
High/Low Humidity Limit	When the Humidity exceeds the parameter, equipment indicator lights
Restore default Setting	Restore factory settings, the user name unchanged, other parameters were initialized factory

3: StateBar: Hint Message.

Set offset parameter:



Read the information: click "read" button will sample the current temperature, humidity and pressure data, offset and user set before the.

Synchronization information: if the measured temperature, humidity and pressure deviation from the actual large (more than technical indexes), users can modify the offset, and then click on the "synchronization information" button for calibration. They shift from -6 to +6, 1 decimal places.

User calibration procedure is as follows

1) offset removal prior to zero. "Each offset settings" column amount changed to 0, and then click on the "synchronization information" button;

2) the recorder connected via USB PC, then the recorder on the temperature, humidity and pressure constant environment, let the recorder and the environment to achieve full balance;

3) click "read information" button to read in the environment is constant temperature (T), relative humidity (H) and pressure (P), the actual temperature, humidity and air pressure assuming constant environment are respectively T' , H' , P' , the offset should be set to $T'-T$, $H'-H$, $P'-P$, and then click "synchronization information" button to complete the offset correction.

Note: the factory calibrated sensor, measuring temperature, humidity and pressure only deviate from the actual large only when calibration is required, or not recommended calibration. And calibration of temperature, humidity and pressure keep constant environment, and let the recorder and the environment to achieve full balance; if the use of standard meter calibration by comparison, ensure accuracy than recorder high standard, conform to the requirements of the standard error of less than or equal to 1/4 recorder error.



Down

Download data: download the data process, do not pull out equipment, until the data download



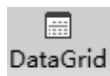
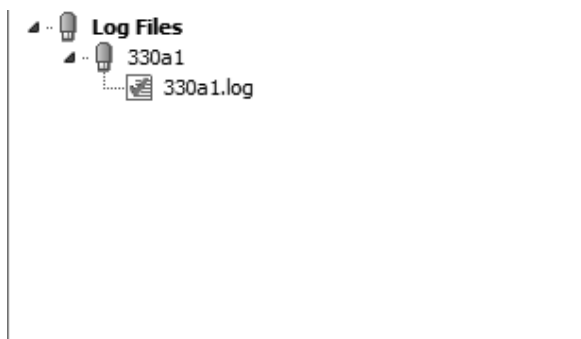
Delete

Delete equipment data, delete data, the data cannot be recovered, please download the data saved in time



File List

Display log files to a list, the default file name is: device name _ date _ when.Log;Recommend that you use the default naming



DataGrid

To display the data in tabular form, the order of sequence data real-time equipment records

NO.	DateTime	℃	%RH	HPa
1	2013-10-29 16:30:12	28.3	49.4	0.0
2	2013-10-29 16:30:15	28.4	48.1	0.0
3	2013-10-29 16:30:17	28.4	47.6	0.0
4	2013-10-29 16:30:19	28.4	47.3	0.0
5	2013-10-29 16:30:21	28.4	47.1	0.0
6	2013-10-29 16:30:23	28.4	46.5	0.0
7	2013-10-29 16:30:25	28.4	46.4	0.0
8	2013-10-29 16:30:27	28.4	46.9	0.0
9	2013-10-29 16:30:29	28.4	46.7	0.0
10	2013-10-29 16:30:31	28.3	45.0	0.0
11	2013-10-29 16:30:33	28.4	45.7	0.0
12	2013-10-29 16:30:35	28.4	46.8	0.0
13	2013-10-29 16:30:37	28.4	46.7	0.0
14	2013-10-29 16:30:39	28.4	46.7	0.0
15	2013-10-29 16:30:41	28.4	46.6	0.0
16	2013-10-29 16:30:43	28.4	46.2	0.0
17	2013-10-29 16:30:45	28.4	46.2	0.0
18	2013-10-29 16:30:47	28.4	46.3	0.0
19	2013-10-29 16:30:49	28.4	45.8	0.0
20	2013-10-29 16:30:51	28.3	46.1	0.0
21	2013-10-29 16:30:53	28.3	46.5	0.0
22	2013-10-29 16:30:55	28.4	46.7	0.0
23	2013-10-29 16:30:57	28.4	46.5	0.0
24	2013-10-29 16:30:59	28.3	46.1	0.0
25	2013-10-29 16:31:01	28.3	45.5	0.0



Filter the log data, the data after filtering the data list and charts while update

Filter... X

Start DateTime

End DateTime



Open the history data, data default installation directory under the Data directory,

recommended to use the default directory.



Preservation of data, data is the default installation directory under the Data directory, recommended to use the default directory, and the default file name;

2.5 About information

